

Neutrix®

WAG 90.1 MAX

the tungsten grinder



Setting higher standards

- grinding in longitudinal direction
- stepless angle setting
- triple use of the grinding disc
- integrated dust extraction
- cone stump grinding possible
- running time 100%
- less dust
- able to grind tungsten electrodes as short as 15mm
- deburring for ac-welding

www.neutrix.biz

With the Neutrix WAG90.1MAX a stationary tungsten grinder was developed which guarantees reproducible quality sections of tungsten electrodes for WIG, Plasma and orbital welding. It meets the requirements of environmental protection. The special feature of the device, is to grind a variable cone stump under the same and reproducible condiotions.

Electrode-diameter: 1,0 to 5,6 mm standard
6,0 to 8,0 mm optional
Electrode-length: 15 - 175 mm

fine dust filter and coarse dust container



guideline values for electrode-diameter of 2,4mm:

grindingangle	15°	30°	45°	60°	75°
welding current	10-50A	20-90A	30-140A	50-180A	80-230A

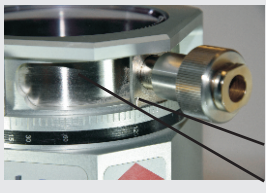
A cone stump at the top of the electrode improves the ignitionand the performance of the grinded electrode.



At the scale the angle can be adjusted stepless.

Grinding angle of 7,5 ° to 90 ° arise a tip angle of 15 °to 180 °

The angle stop (W) allows a reproducible grinding under same conditions from 15° to 75°.



The excentric plate (E) enables the triple use of the diamond disc on different grinding orbit

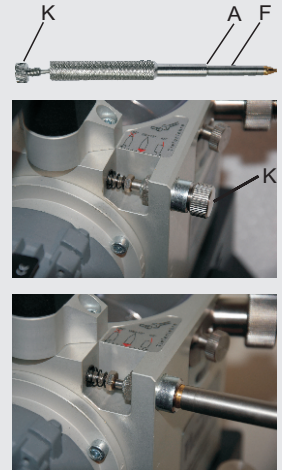


The exact guide (F) an the stop (A) on electrodeholder ensures a precise longitudinal grinding.

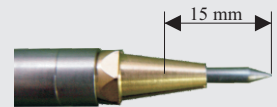
The basic setting of the depthgauge is reached by calibrationscrew (K)

90.1MAX

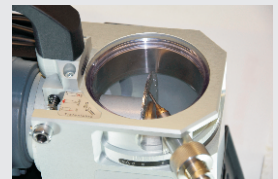
The pre-set depthgauge allows an economic grinding of the electrode tip (minimal consumption of the electrode, short grinding time, less dust and low wear of the diamond disc.)



With a special clamp short tungsten electrodes as short as 15mm length can be grinded.



Through an inspection glass the grinding process can be observed and the grinding pressure checked. This is to prevent a glowing of the electrode and the diamond disc not to wear out quickly.



The integrated dust extraction and the exchangeable dust filter are another special feature of the device. They were adapted to the requirements for health and safety.



A solid base stabilizes the device during the grinding process.



The Neutrix carries a CE mark, satisfies all applicable EU regulations and is patented.



Neutrix® - the tungsten grider

Typ WAG90.1 MAX

technical data:

power PI:	120 W
power supply:	230 V/ 50 - 60 Hz
duty cycle:	100 %
RPM:	2.950 min ⁻¹
Lpa sound pressure:	62,0 dB(A)
vibrationvalue:	2,8 m/s ²
electrode-diameter:	1,0 mm to 8,0 mm
electrode-length:	from 175 mm tp 15 mm
filtercassette:	disposal filter (Typ 8511 K1.H12)
dustcontainer:	100 x 90 mm
diamonddisc:	ø 90 mm
weight:	12,1kg

art. nr.: 55100

scope of delivery:

Neutrix WAG 90.1MAX
electrodeholder
clamp for electrode ø 1,6 mm
clamp for electrode ø 2,4 mm
clamp for electrode ø 3,2 mm
allen key 4 mm
wrench 13/17
wrench 8/10
cleaning brush
disposalbag for filter
suction cup
operation manual

accessory:

clamp for electrode ø 1,0 mm art. nr.: 55-00-21910
clamp for electrode ø 2,0 mm art. nr.: 55-00-21920
clamp for electrode ø 3,0 mm art. nr.: 55-00-21930
clamp for electrode ø 4,0 mm art. nr.: 55-00-21940
clamp for electrode ø 4,8 mm art. nr.: 55-00-21948
clamp for electrode ø 5,6 mm art. nr.: 55-00-21956

optional accessories:

clamp for elektrode ø 6,0 mm- 8,0 mm
special electrode holder
special clamp for tungsten electrode 15 mm lenght

service-kit

art. nr.: 55-00-90001

Neutrix WAG90 MAX consisting of:

1 tube grease FDA-G2
1 dustcontainer
1 diamonddisc
1 filtercassette
1 suction cup
1 cleaning brush
1 operation manual



Neutrix® - developments

Art.-Nr. 44070



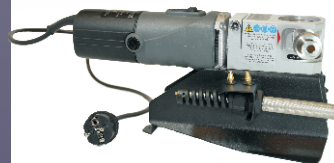
WAG40

Art.-Nr. 54070



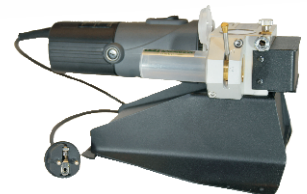
WAG40 S

Art.-Nr. 54071



WAG40 SW

Art.-Nr. 59000



WTG 50

Art.-Nr. 55200



WATG 90.1KOM

More information to our
products, videomaterial
and prospects you can
find on:
www.neutrix.biz



Dealer: